

Sheet Index	
Sheet	Layout
A 01	Cover Page
A 02	Site Plan
A 03	'Type 2 and 3' Floor Layout Plan

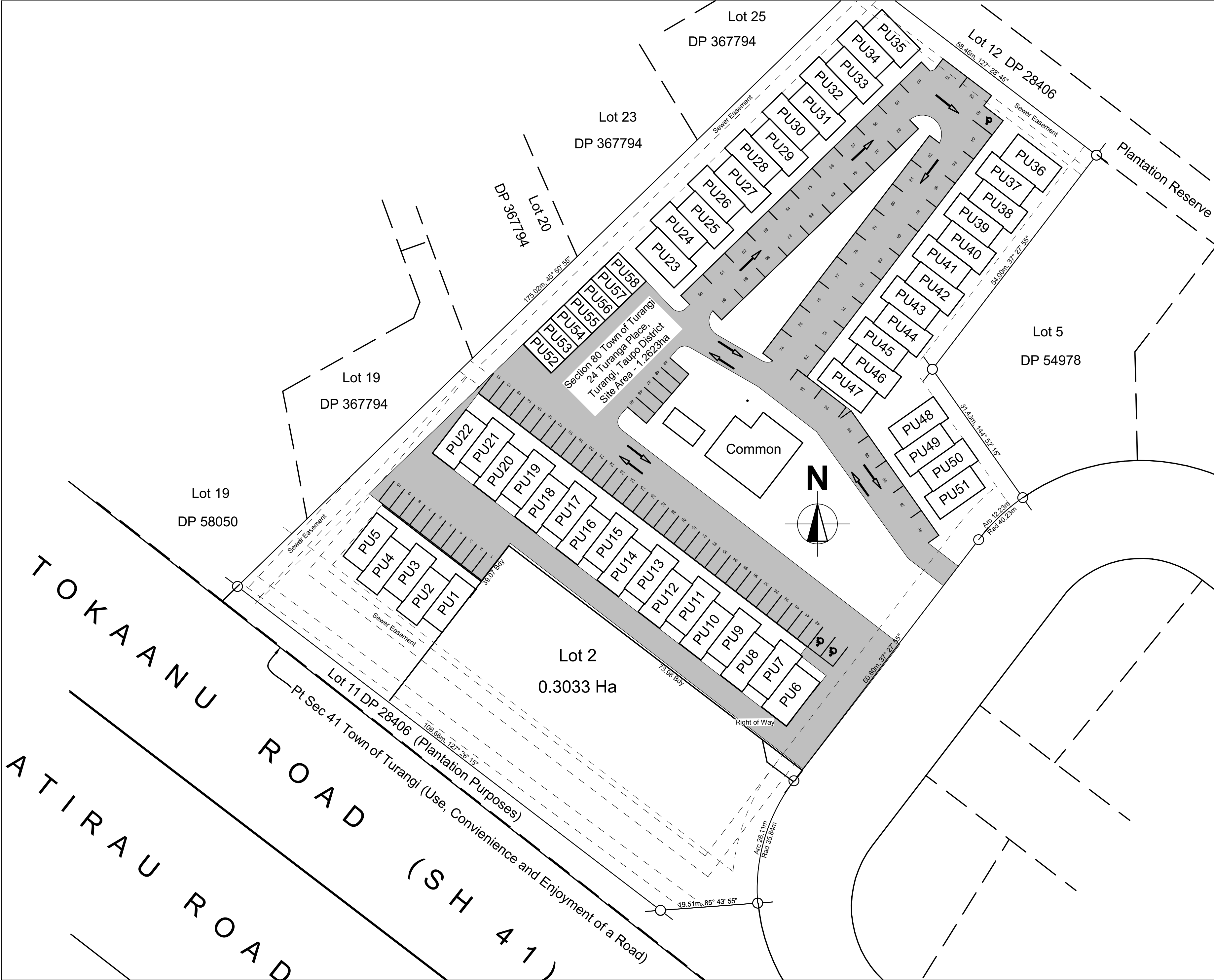


rosetta
stone
arkitektur

2/20 Totara Street Taupo, NZ
P: (07) 3789436 E: info@rosettastone.co.nz
www.rosettastone.co.nz

Design:	N. King
Drawn:	S. McDonald
Checked:	
Status: Scheme Plan	Date printed: 27/05/2016
Job Number	21628

Proposed Alpine Gateway 'Type 2 and 3' Units, for Spatime (NZ) Ltd,
24 Turanga Place, Turangi, Taupo District




These drawings are the proprietary work product and property of Rosetta Stone Arkitektur developed for the exclusive use of Rosetta Stone Arkitektur. Use of these drawings and concepts contained therein without the written permission of rosetta stone arkitektur is prohibited and you may be subjected to a claim for damages.

Any changes made to these plans after prints are made will be done at the owners / builders expense and responsibility. While every effort has been taken in the preparation of this plan to avoid mistakes, the maker can not guarantee human error.

Bracing And Durability		Wind Region		Wind Zone		Earthquake Zone		Exposure Zone	

Notes:

Design:	N. King		
Drawn:	S. McDonald		
	P - (07) 378 9436.		
	M - 021 519 044		
	E - info@rosettastone.co.nz		
	www.rosettastone.co.nz		
Proposed Alpine Gateway 'Type 2 and 3' Units, for Spatime (NZ) Ltd, 24 Turanga Place, Turangi, Taupo District			
Sheet Title			
Site Plan			
Status: Scheme Plan		Date: 27/05/2016	
Scale	1:500	Sheet	A2
Job	21628	A 02 of 30	

These drawings are the proprietary work product and property of Rosetta Stone Arkitektur developed for the exclusive use of Rosetta Stone Arkitektur. Use of these drawings and concepts contained therein without the written permission of rosetta stone arkitektur is prohibited and you may be subjected to a claim for damages.

Any changes made to these plans after prints are made will be done at the owners / builders expense and responsibility. While every effort has been taken in the preparation of this plan to avoid mistakes, the maker can not guarantee human error.

Bracing And Durability					
Wind Region					A W
Wind Zone	L	M	VH	EH	SED
Earthquake Zone			1	2	3 4
Exposure Zone				B	C D

Notes:



Type '2' Unit, Ground Floor Type '3' Unit, Ground Floor

GF Floor Layout Plan 1:75



Type '2' Unit, First Floor Type '3' Unit, First Floor

F.F. Floor Layout Plan 1:75

Type 2
Ground Floor Plan Area - 64.9m²
First Floor Plan Area - 64.9m²
Total Covered Deck Area - 11.7m²

Type 3
Ground Floor Plan Area - 57.8m²
First Floor Plan Area - 57.8m²
Total Covered Deck Area - 10.2m²

Design:	N. King
Drawn:	S. McDonald

rosetta

stone

arkitektur

P - (07) 378 9436.

M - 021 519 044

E - info@rosettastone.co.nz

www.rosettastone.co.nz

Proposed Alpine Gateway 'Type 2 and 3' Units, for
Spatime (NZ) Ltd, 24 Turanga Place, Turangi,
Taupo District

Sheet Title, **Type 2 and 3' Floor Layout
Plan**

Status: Scheme Plan	Date: 27/05/2016	Sheet A2
Scale	1:75	
Job	21628	A 03 of 30